

Referee: LOTTERMOSER Robert
 Umpires: HODZIC Nermin / ADRIAN Iglesias Ambrosio
 Commissioner:

Attendance: 0
 DI 20 SEP 2022, 17:00, Game-ID: BRA_GOT

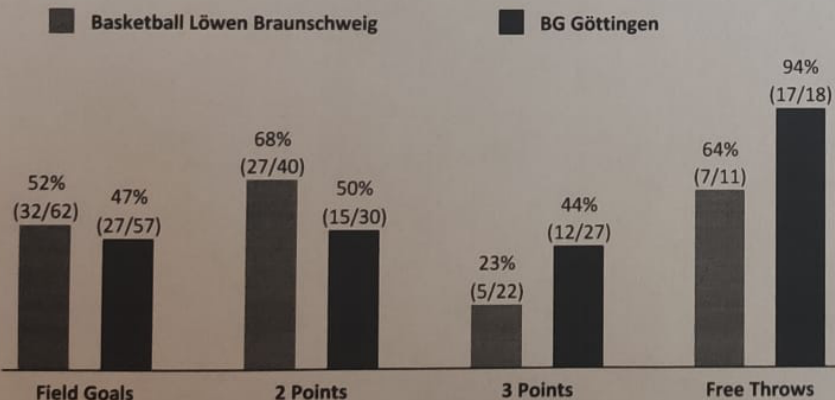
	Q1		Q2		Q3		Q4	
BRA	25	25	19	44	13	57	19	76
GOT	20	20	20	40	29	69	14	83

BRA - Basketball Löwen Braunschweig (Coach: RAMIREZ Jesus)

No.	Name	Min	PTS	2 Points	3 Points	Field Goals	Free Throws	OR	DR	TR	AS	ST	TO	BS	SB	PF	FD	EFF	+/-
3	TISCHLER Nicholas	24:44	14	7/8 (88%)	0/1 (0%)	7/9 (78%)	0/1 (0%)		3	3	3	4	1	1	1	4	4	21	-8
*4	VAN SLOOTEN Luc	24:20	11	1/3 (33%)	3/5 (60%)	4/8 (50%)		1		1		4	3		1	1		9	-12
8	BANGO Jilson	21:49	12	5/9 (56%)	0/1 (0%)	5/10 (50%)	2/4 (50%)	2	3	5		2	2		1	2	3	10	-12
10	FRU Sananda	18:53	2	1/1 (100%)	0/2 (0%)	1/3 (33%)		2	1	3	2		1	1		3		5	-1
12	GÖTTSCHE Jannik	DNP																	
*13	TISCHLER Brandon	23:29	16	5/6 (83%)	1/1 (100%)	6/7 (86%)	3/4 (75%)		3	3	1		2			5	5	16	4
19	SEHNAL Ondrej	17:24	7	2/2 (100%)	1/2 (50%)	3/4 (75%)			4	4	2		6			2	1	6	1
*21	AMAIZE Robin	19:13	4	2/6 (33%)	0/5 (0%)	2/11 (18%)			2	2	2	1	2			3		-2	-10
*33	HOBBS Braydon	26:30	2	1/1 (100%)	0/4 (0%)	1/5 (20%)			2	2	5		2					3	-2
*44	TURUDIC Benedikt	23:38	8	3/4 (75%)	0/1 (0%)	3/5 (60%)	2/2 (100%)	1	1	2	3	2	1			1	3	12	5
Team / Coach									3		3							3	
Totals		200:00	76	27/40 (68%)	5/22 (23%)	32/62 (52%)	7/11 (64%)	9	19	28	18	13	20	2	3	21	16	83	-7

GOT - BG Göttingen (Coach: MOORS Roel)

No.	Name	Min	PTS	2 Points	3 Points	Field Goals	Free Throws	OR	DR	TR	AS	ST	TO	BS	SB	PF	FD	EFF	+/-
*00	MOORE Taze	13:58	2	1/3 (33%)	0/2 (0%)	1/5 (20%)					2	3	3	1		5		1	7
0	HEMSCHMEIER Peter	8:17	2	1/1 (100%)		1/1 (100%)					2		1				1	3	7
*1	CRANDALL Geno	27:28	13	2/3 (67%)	1/3 (33%)	3/6 (50%)	6/6 (100%)		2	2	3	3	6	2			7	14	6
3	GIOTIS Marios	5:12	3		1/1 (100%)	1/1 (100%)		1		1						1		4	-2
*9	PAPE Till	27:20	20	3/8 (38%)	4/6 (67%)	7/14 (50%)	2/2 (100%)	2	3	5	1				2	1	2	19	10
10	BESS Javon	30:57	9	2/2 (100%)	1/4 (25%)	3/6 (50%)	2/2 (100%)		2	2	3	2				1	2	13	-1
11	MÖNNINGHOFF Mathis	19:05	6	0/1 (0%)	2/3 (67%)	2/4 (50%)					1		2			1	1	3	-17
12	BOAKYE Nick	6:42	2	1/1 (100%)		1/1 (100%)							1			1		1	0
*13	SMITH Mark	34:08	14	2/6 (33%)	1/5 (20%)	3/11 (27%)	7/8 (88%)	1	4	5	4	1	6			3	7	9	4
14	ANI Jason	DNP																	
*16	HAMMONDS Rayshaun	26:53	12	3/5 (60%)	2/3 (67%)	5/8 (63%)		1	11	12	2		2			4		21	21
Team / Coach									5	2	7						7		
Totals		200:00	83	15/30 (50%)	12/27 (44%)	27/57 (47%)	17/18 (94%)	10	24	34	18	9	21	3	2	17	20	95	7



BRA		GOT
9 / 19 / 28	Rebounds OR/DR/TR	10 / 24 / 34
18	Assists	18
21	Fouls	17
16	Fouls Drawn	20
20	Turnovers	21
13	Steals	9
50	Points in the Paint	30
10	Second Chance Points	10
2	Fast Break Points	
9 (19:10)	Biggest Lead	18 (51:69)
10-0 (74:79)	Biggest Scoring Run	19-0 (49:66)
	Lead Changes:	2
	Times Tied:	4